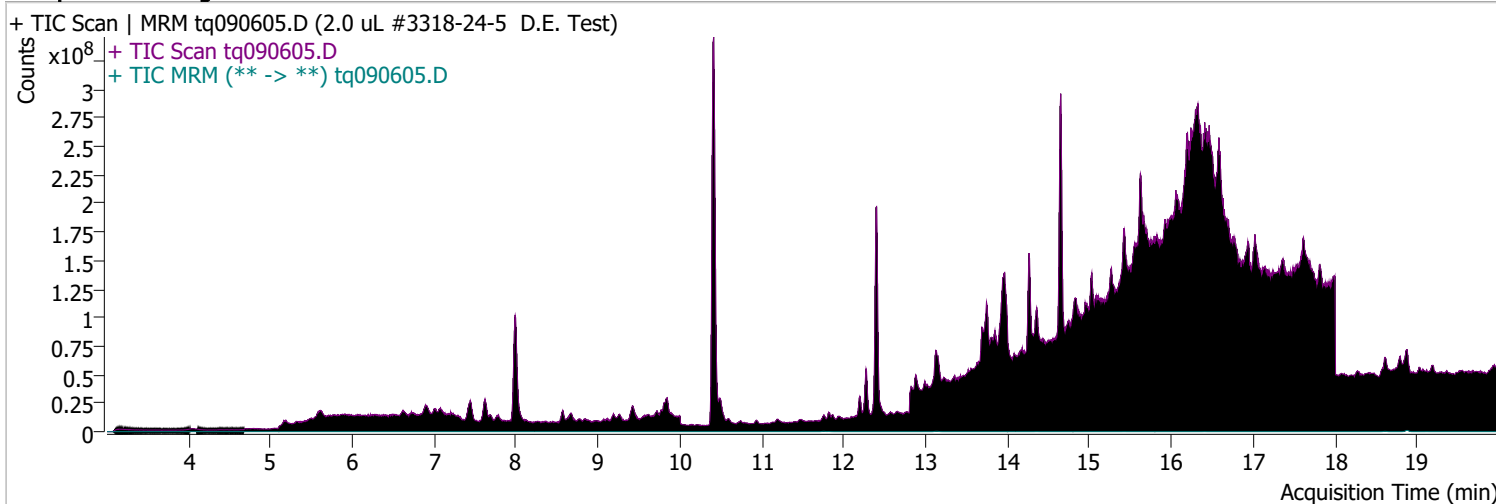


# Quantitative Analysis Sample Report

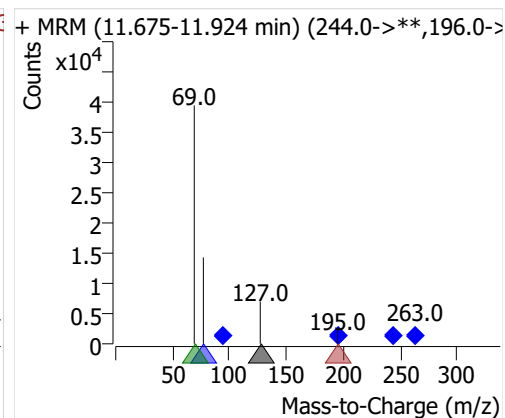
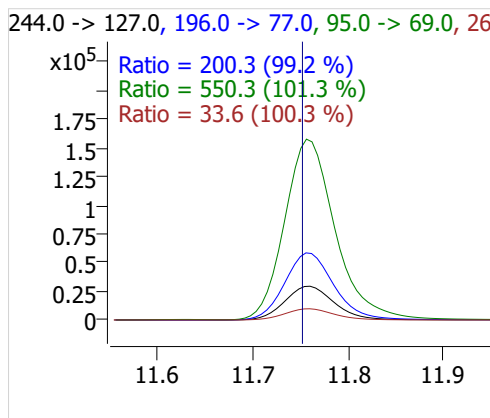
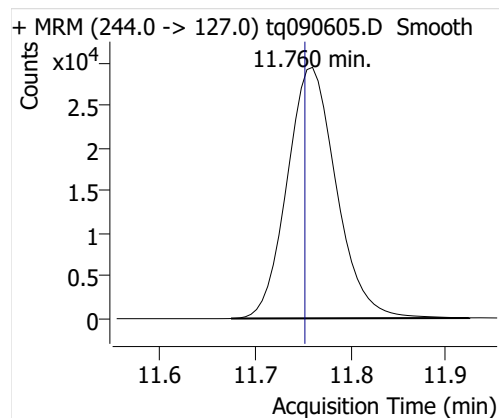
Batch Path	D:\MassHunter\GCMS\1\data\06sep22\QuantResults\06sep22.batch.bin		
Analysis Time	9/6/2022 11:55 AM	Analyst Name	DESKTOP-R0LAL7E\analyst
Report Time	10/20/2022 1:34:06 PM	Reporter Name	ES-AREA1\US32_USR_INS22923
Last Calib Update	9/6/2022 9:10 AM	Batch State	Processed
Quant Batch Version	10.1	Quant Report Version	10.1
Acq. Time	9/6/2022 2:14 PM	Data File	tq090605.D
Sample Type	Sample	Sample Name	2.0 uL #3318-24-5 D.E. Test
Dilution	1	Acq. Method	tq22m0831

## Sample Chromatogram

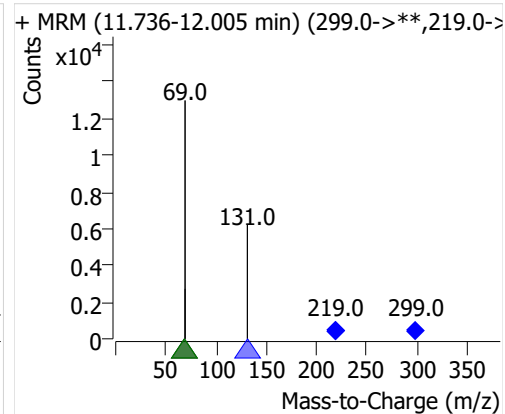
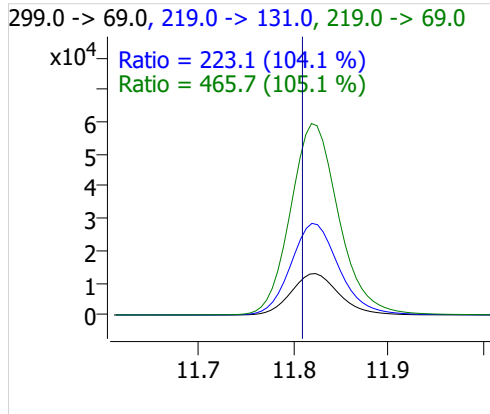
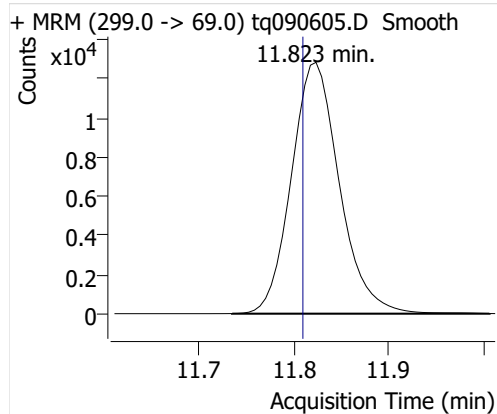


Compound	ISTD	RT	Resp.	ISTD Resp.	Resp. Ratio	Final Conc	Units
4:2 FTOH	6:2 FTOH-C13	11.760	105400	25886	4.0716	9.7869	ng
5:2sFTOH	6:2 FTOH-C13	11.823	44906	25886	1.7347	9.8340	ng
7:2sFTOH	6:2 FTOH-C13	13.127	89989	25886	3.4763	9.2035	ng
6:2 FTOH	6:2 FTOH-C13	13.153	187551	25886	7.2452	9.3971	ng
8:2 FTOH-C13	6:2 FTOH-C13	14.360	8832	25886	0.3412	1.1041	ng
8:2 FTOH	6:2 FTOH-C13	14.360	58527	25886	2.2609	10.0580	ng
10:2 FTOH	6:2 FTOH-C13	15.426	21995	25886	0.8497	11.3023	ng
12:2 FTOH	6:2 FTOH-C13	16.406	79925	25886	3.0875	10.8359	ng
NMeFOSA	6:2 FTOH-C13	18.615	57563	25886	2.2237	12.3923	ng
NEtFOSA	6:2 FTOH-C13	18.885	256137	25886	9.8947	12.3209	ng

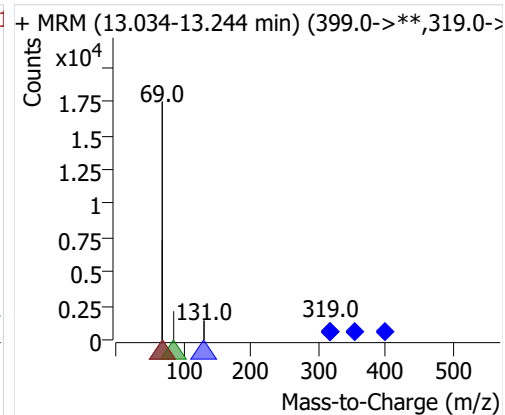
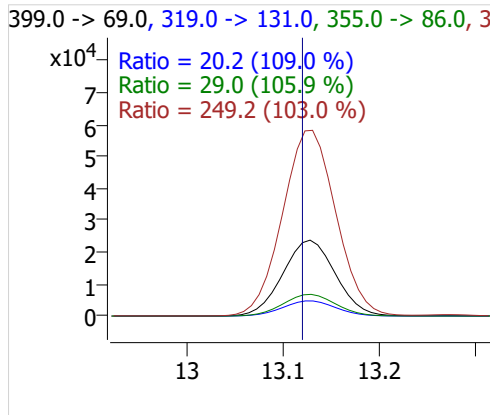
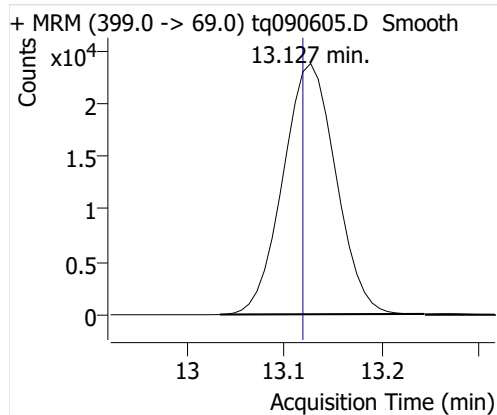
## 4:2 FTOH



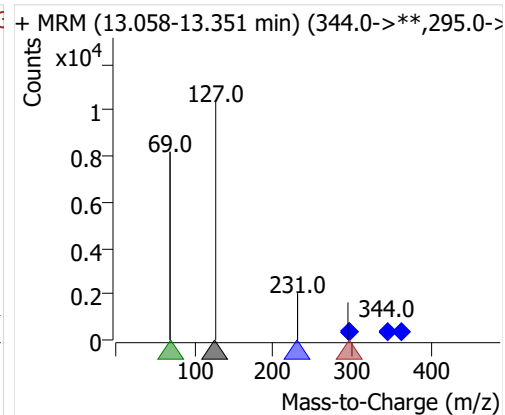
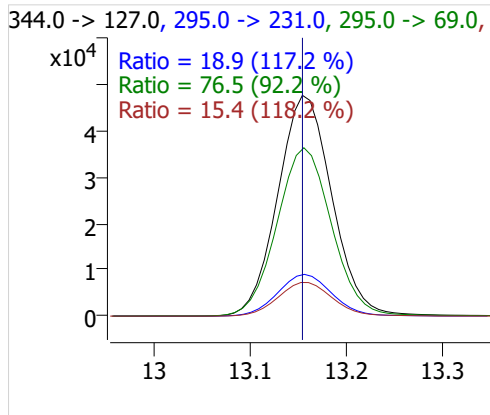
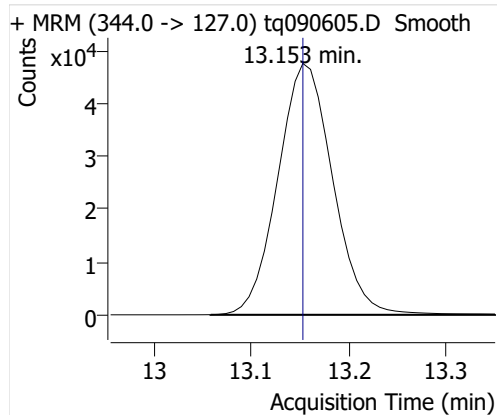
## 5:2sFTOH



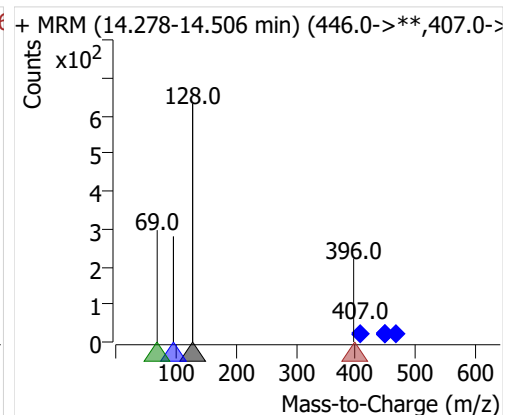
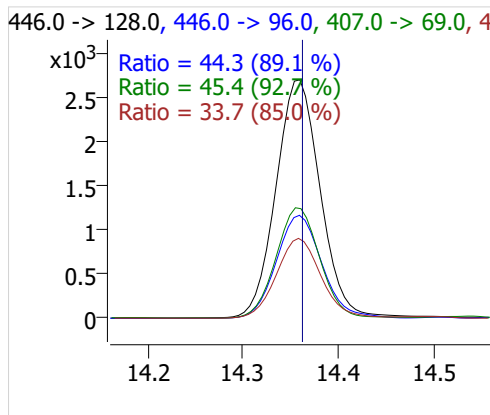
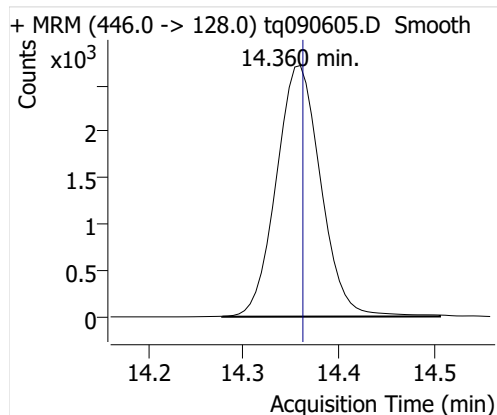
## 7:2sFTOH



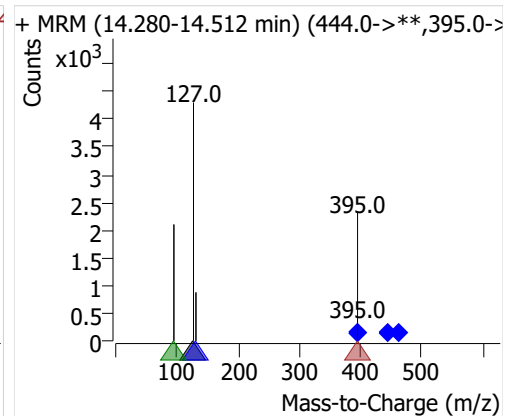
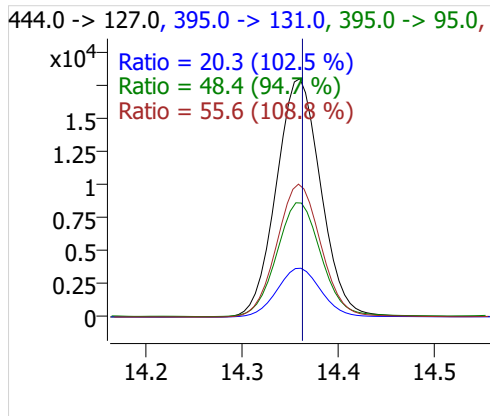
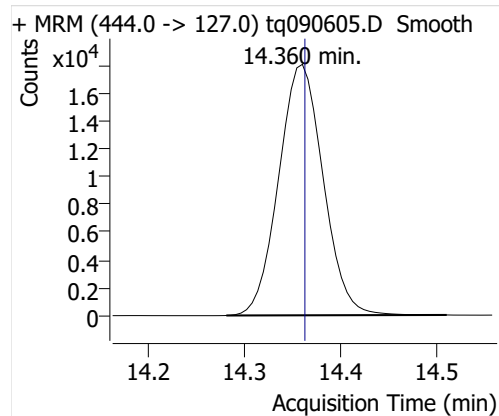
## 6:2 FTOH



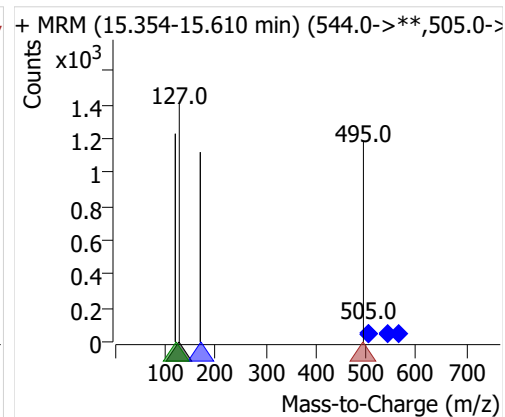
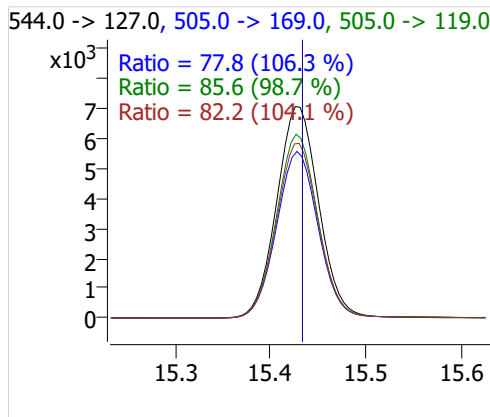
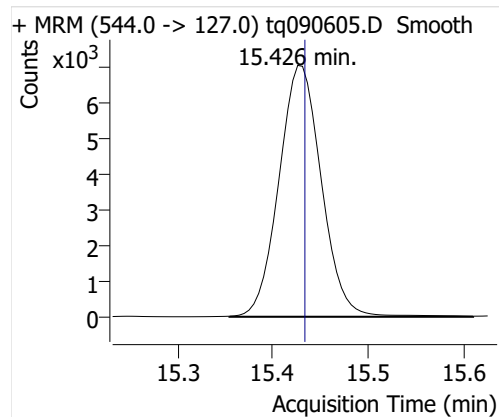
## 8:2 FTOH-C13



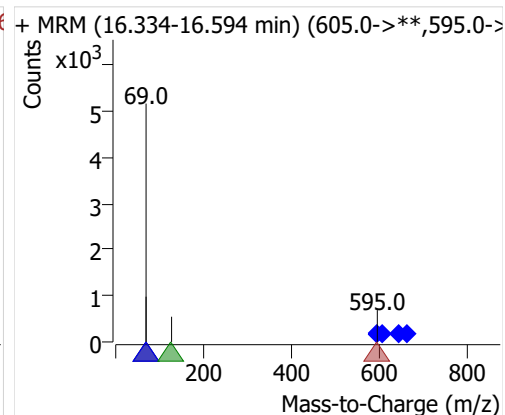
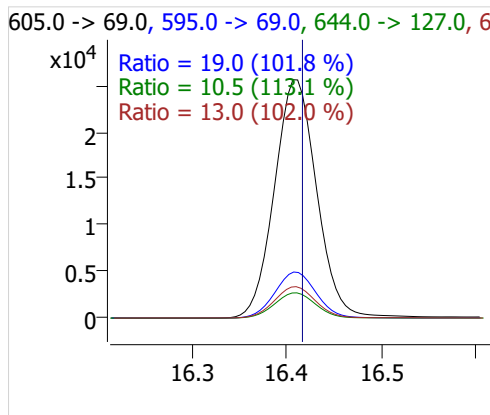
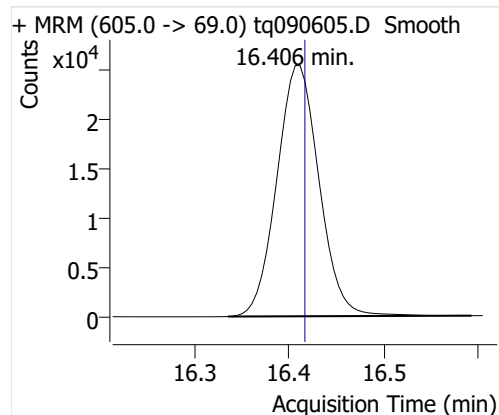
## 8:2 FTOH



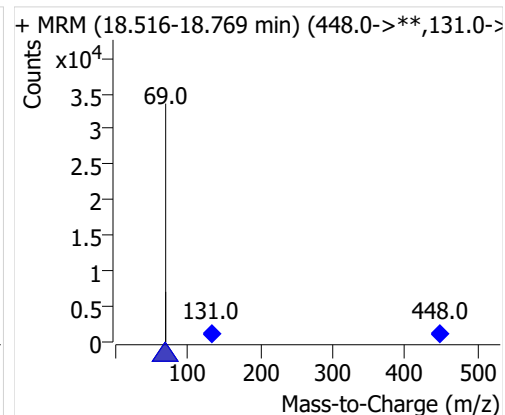
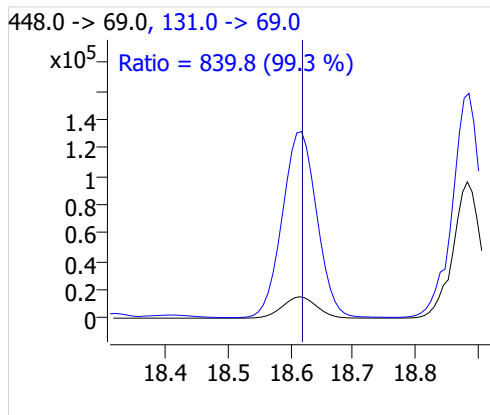
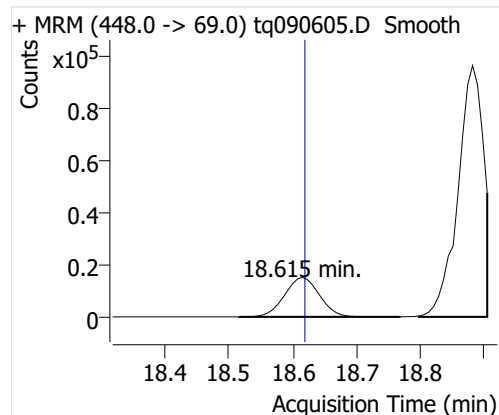
## 10:2 FTOH



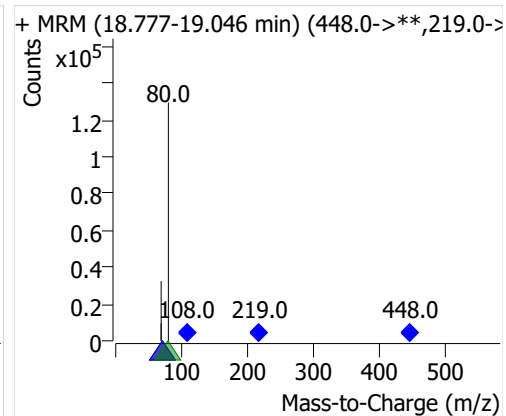
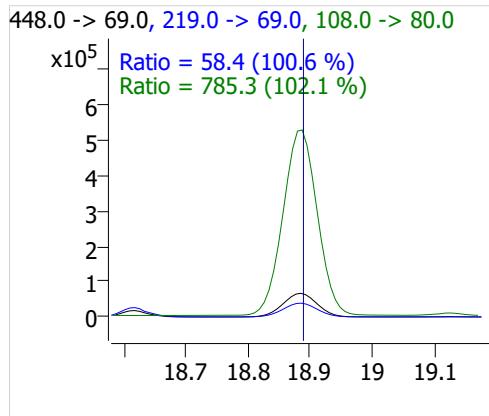
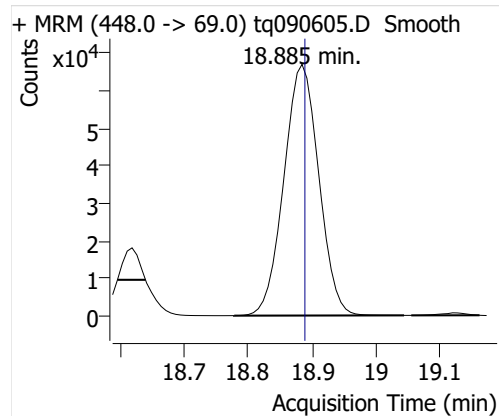
## 12:2 FTOH



## NMeFOSA



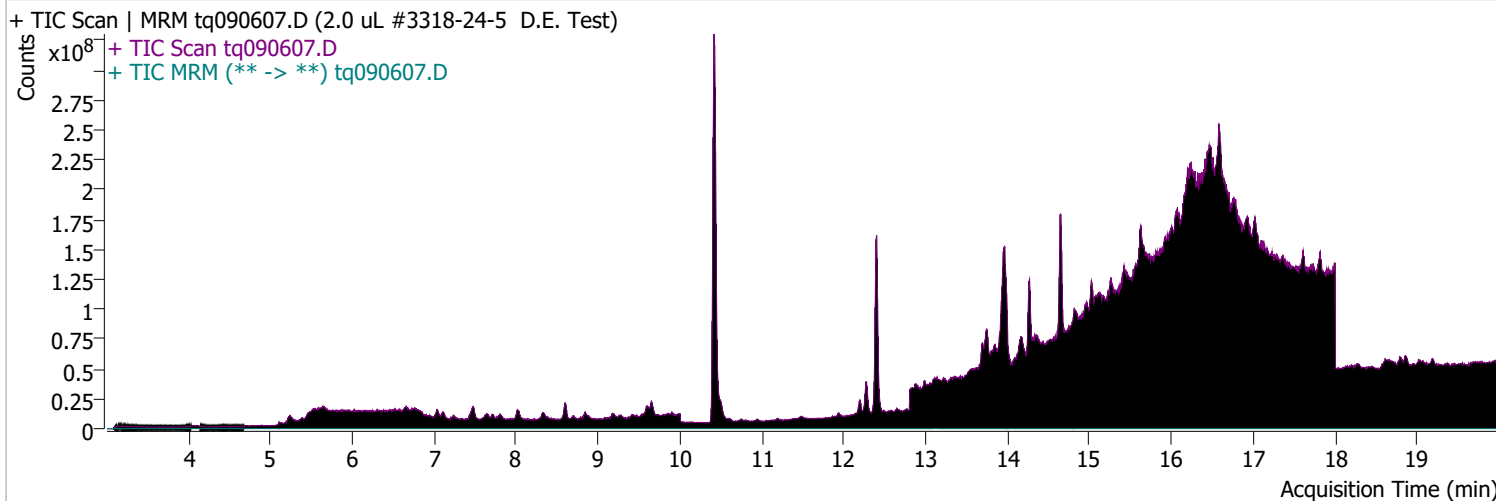
## NETFOSA



# Quantitative Analysis Sample Report

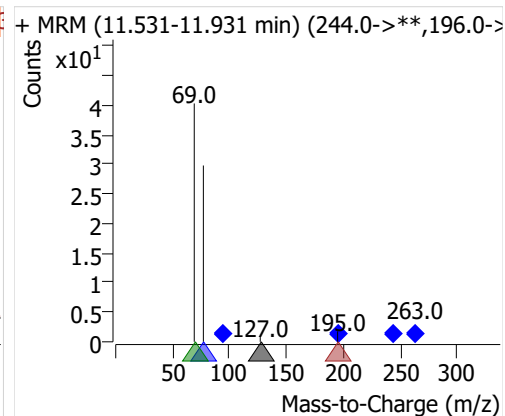
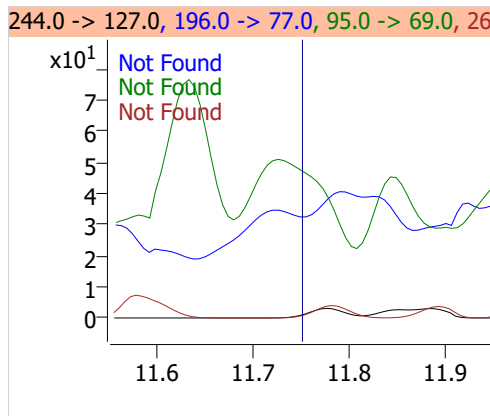
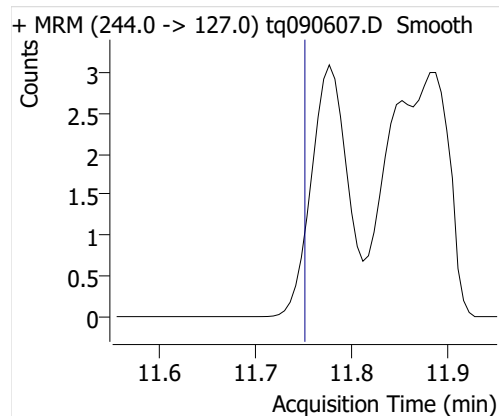
Batch Path	D:\MassHunter\GCMS\1\data\06sep22\QuantResults\06sep22.batch.bin		
Analysis Time	9/6/2022 11:55 AM	Analyst Name	DESKTOP-R0LAL7E\analyst
Report Time	10/20/2022 1:34:08 PM	Reporter Name	ES-AREA1\US32_USR_INS22923
Last Calib Update	9/6/2022 9:10 AM	Batch State	Processed
Quant Batch Version	10.1	Quant Report Version	10.1
Acq. Time	9/6/2022 3:36 PM	Data File	tq090607.D
Sample Type	Sample	Sample Name	2.0 uL #3318-24-5 D.E. Test
Dilution	1	Acq. Method	tq22m0831

## Sample Chromatogram

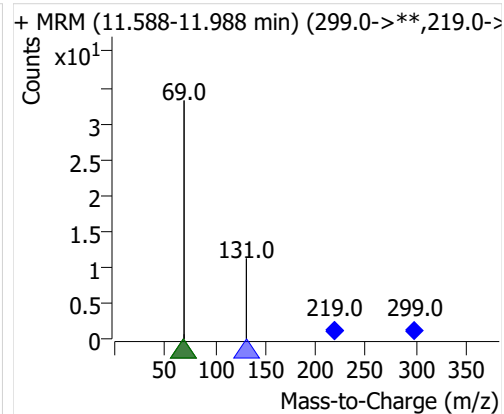
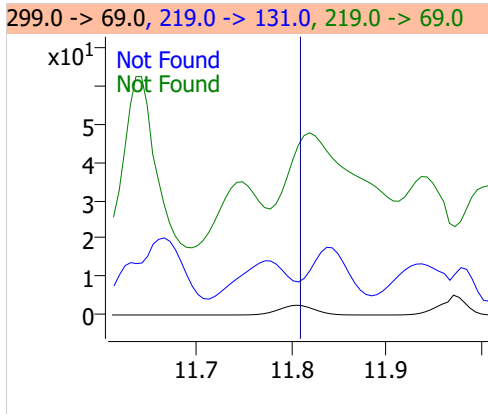
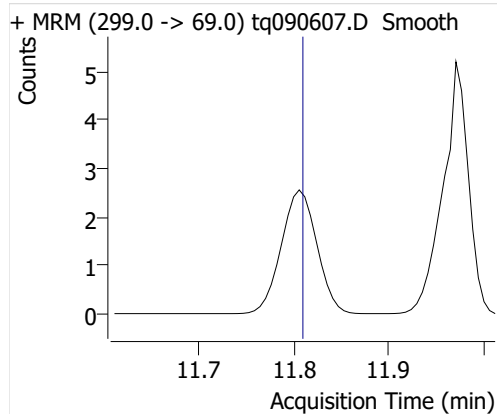


Compound	ISTD	RT	Resp.	ISTD Resp.	Resp. Ratio	Final Conc	Units
4:2 FTOH	6:2 FTOH-C13			25283		ND	ng
5:2sFTOH	6:2 FTOH-C13			25283		ND	ng
7:2sFTOH	6:2 FTOH-C13			25283		ND	ng
6:2 FTOH	6:2 FTOH-C13			25283		ND	ng
8:2 FTOH-C13	6:2 FTOH-C13			25283		ND	ng
8:2 FTOH	6:2 FTOH-C13			25283		ND	ng
10:2 FTOH	6:2 FTOH-C13			25283		ND	ng
12:2 FTOH	6:2 FTOH-C13			25283		ND	ng
NMeFOSA	6:2 FTOH-C13			25283		ND	ng
NEtFOSA	6:2 FTOH-C13			25283		ND	ng

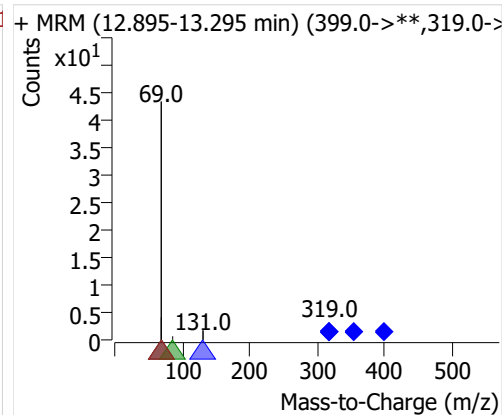
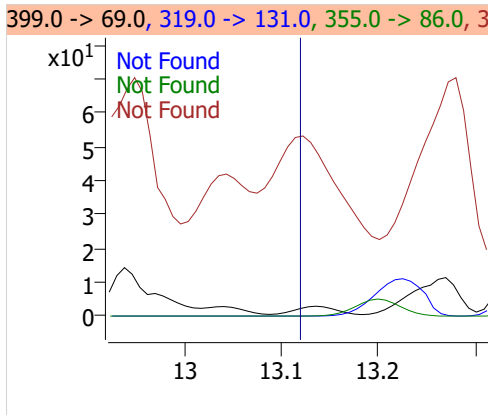
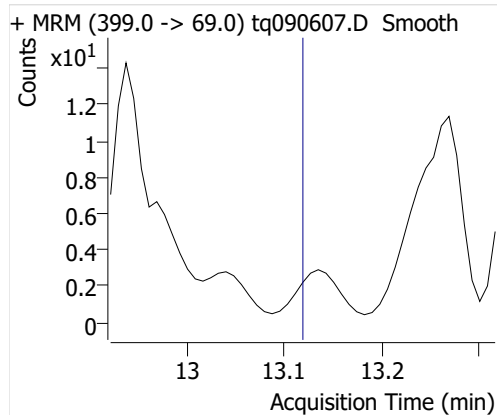
## 4:2 FTOH



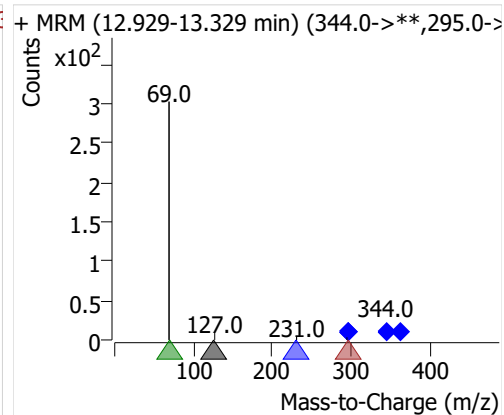
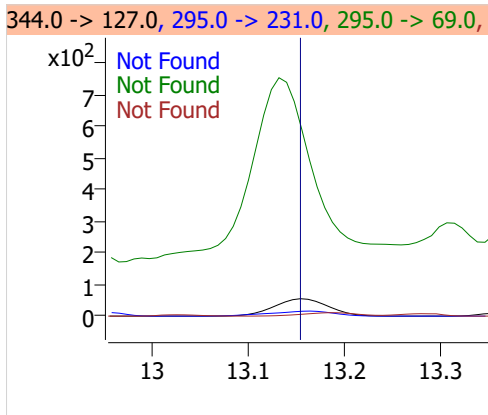
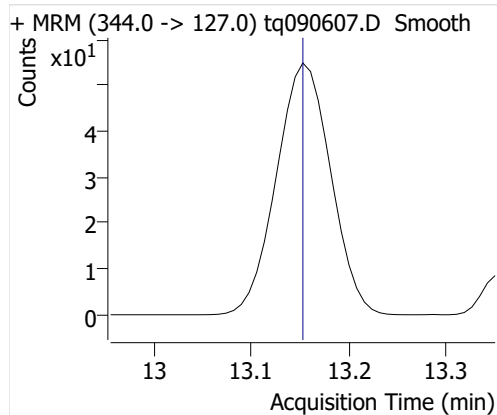
## 5:2sFTOH



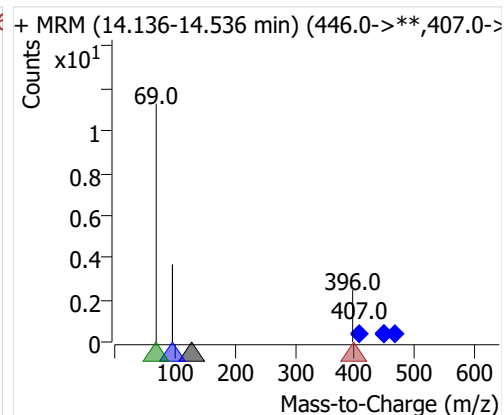
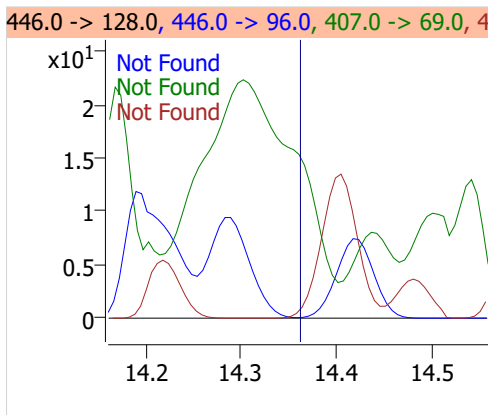
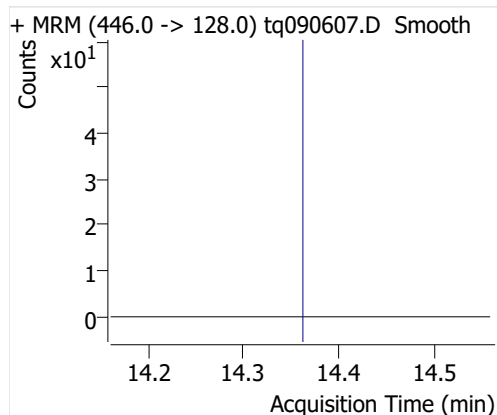
## 7:2sFTOH



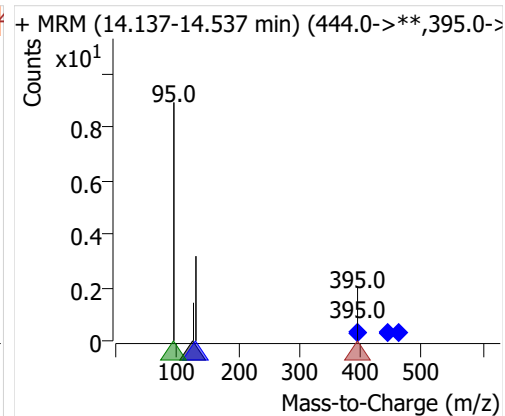
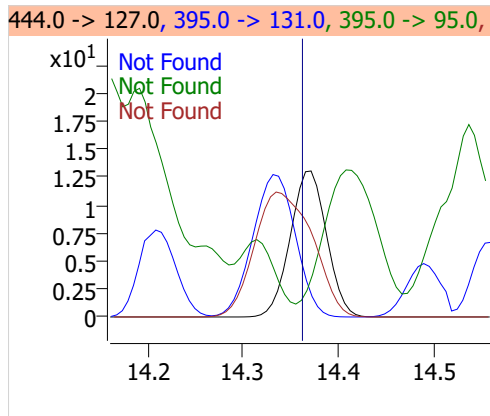
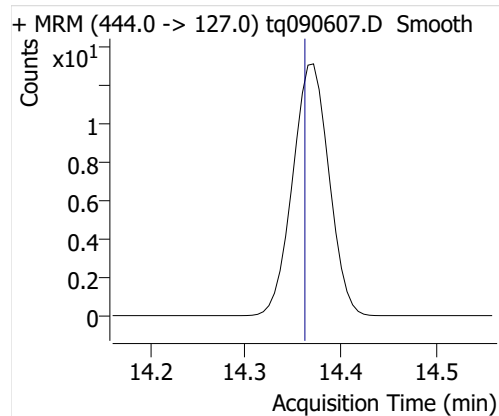
## 6:2 FTOH



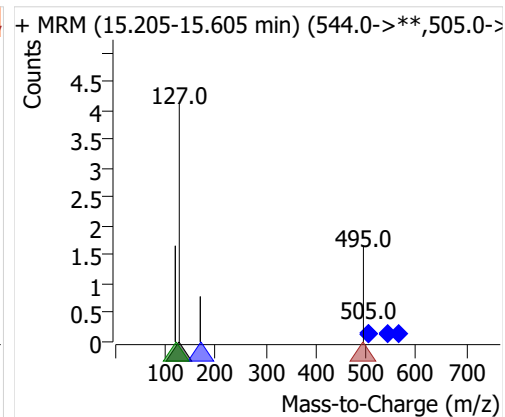
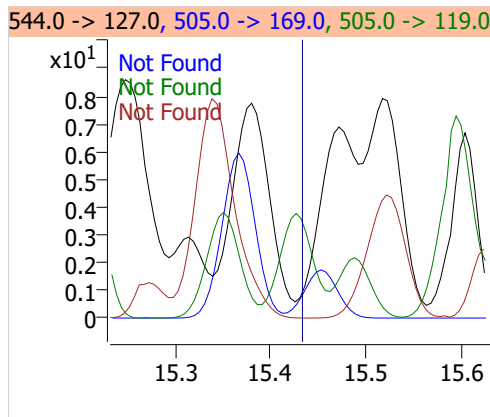
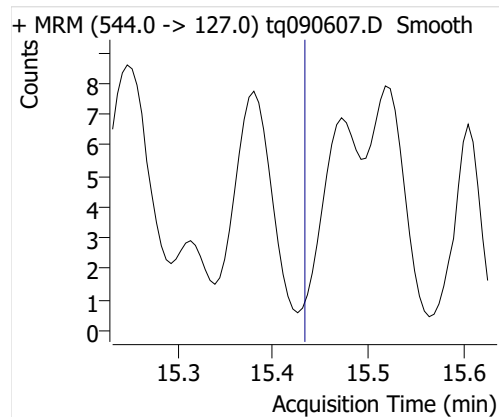
## 8:2 FTOH-C13



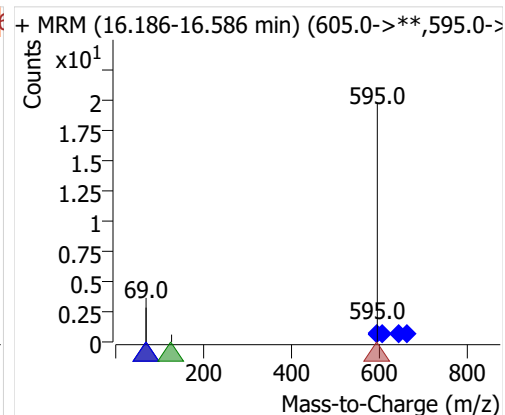
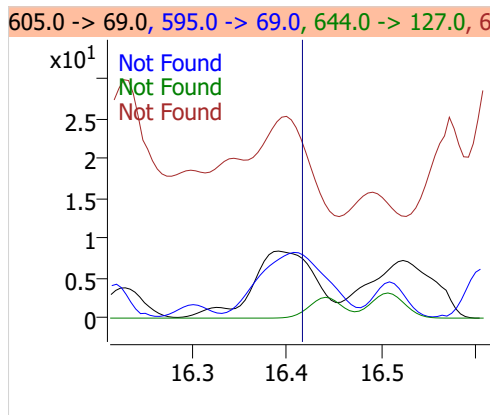
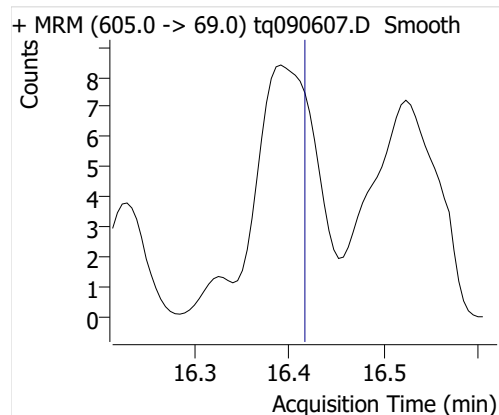
## 8:2 FTOH



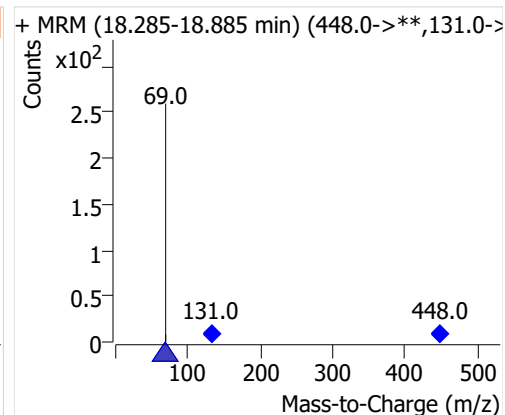
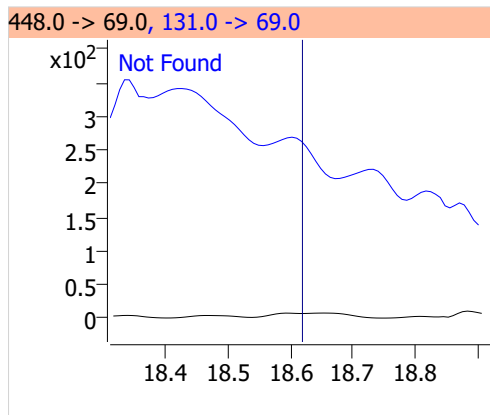
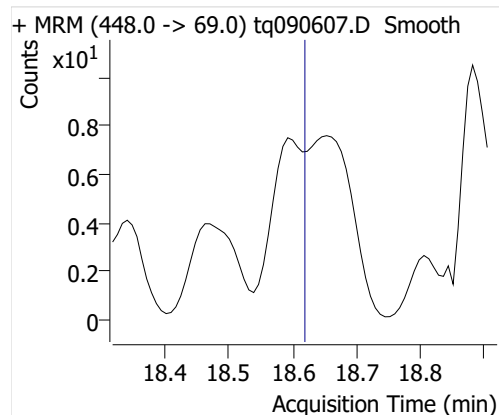
## 10:2 FTOH



## 12:2 FTOH



## NMeFOSA



## NETFOSA

